

1501 - 1065 QUAYSIDE DRIVE

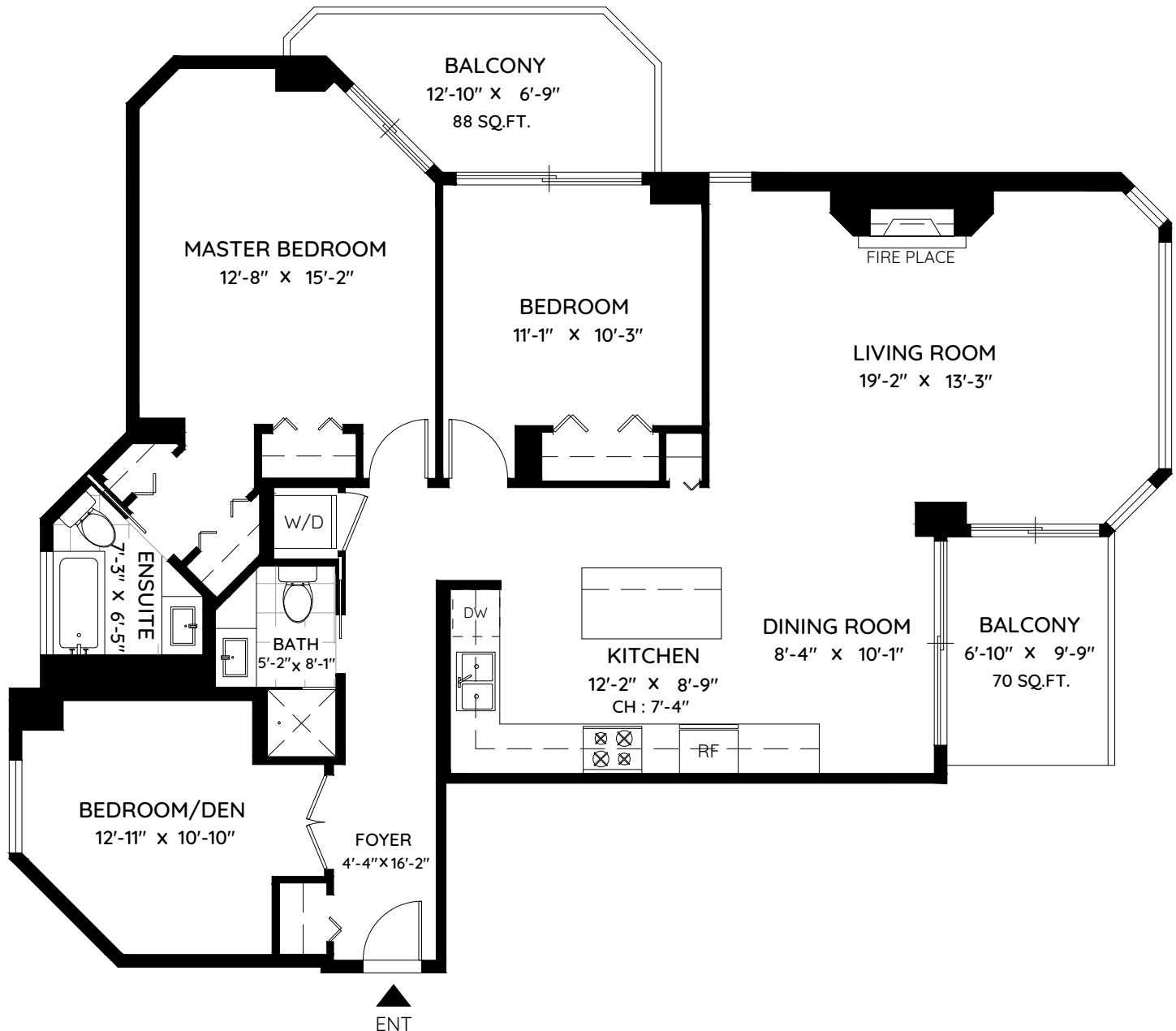
NEW WESTMINSTER, BC



LIVING AREA 1,294 SQ.FT.

BALCONY 158 SQ.FT.

CEILING HEIGHT 8'-0"



0 ft 3 ft 5 ft



The floor plan and the measurements are approximate and are to be used for advertising usage only. Not suitable for architectural or construction. E&O Insured

